



MANORS ON MAYFIELD

WHITBY, ONTARIO

GARDEN STREET & MANNING ROAD



HEART OF THE CITY

Elegant, modern homes rooted in History.

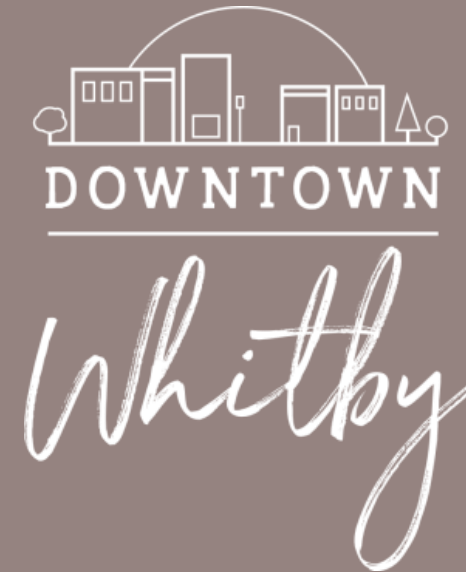
Manors on Mayfield is located in the heart of the city on the historic formal grounds of the Mayfield House (Circa 1845). Nestled behind the Durham Region Headquarters, surrounded by a fully developed community filled with small town charm and futuristic nature.



WELCOME TO WHITBY!

780 Garden Street, Whitby On

Embrace the calm and vibrant town that embodies family and community. Nothing is too far away! A peaceful afternoon at the beach to an exhilarating evening stroll through DownTown Whitby.





WHITBY MARINA

The advantages of living in Manois on Mayfield are endless, surrounded by beautiful garden scenery and green space for your leisure and relaxation.

Enjoy the sandy beaches of Whitby Marina, just minutes away from home. Excellent for biking, fishing, boating, camping, and hiking for all of the adventurous outdoor lovers.



DOWNTOWN WHITBY KNOWN FOR ARTS & CULTURE

Enjoy taking a stroll in Downtown Whitby, a centralized cultural district with a wide variety of individual artist studios, independent galleries, music venues, museums, breweries and restaurants strung along an equally wide variety of trails, roads, rails and waterways in an area around the core of Whitby.

Whitby



SERENE SOPHISTICATION

Elegantly designed with the finest stone, brick and stucco to bring luxury to the historic grounds of Mayfield.





Manors on Mayfield is located on the Historic grounds of Mayfield, surrounded by a fully developed neighborhood at Garden and Manning. This location in Whitby is limitless to opportunities in recreation, shopping, highways, transit and more. Built for the future, these luxury designed homes will be equipped with electric green car charging station rough ins.

SITE PLAN





HEART OF WHITBY

Transit friendly with easy access to the GO Station, VIA Rail and Durham Region Transit. Just minutes away from both Highway 401 and 407, making travelling across the GTA a breeze. Take a walk in downtown Whitby for Arts & Culture or a jog or bike down a Whitby Beach for a great family outing.

EATERY

1. The Brock House
2. Bella Note
3. Wolf Gang
4. Chatterpauls
5. Chucks Roadhouse
6. Bostons Pizza
7. Wimpy's Diner
8. Bistro 238
9. Harvey's
10. Domino's Pizza
11. Pizza Pizza
12. Mary Browns
13. Marca Cafe
14. Pizza Hut
15. Brock St. Brewing Company
16. Subway

SCHOOLS

1. Donald A. Wilson SS
2. Trent University
3. Pringle Creek PS
4. Trafalgar Castle School
5. Blyth Academy
6. John Dryden PS
7. Glen Dhu PS

SHOPPING

1. Farm Boys
2. Real Canadian Superstore
3. Dollarama
4. Whitby Mall
5. Walmart
6. M&M Food Market
7. FreshCo
8. LCBO
9. Lowes
10. Winners
11. Canadian Tire
12. Home Depot

RECREATION/ ENTERTAINMENT

1. Whitby Civic Recreation Complex
2. Iroquois Beach
3. Whitby Marina
4. Baycliffe Park
5. The Grid Entertainment Center
6. Landmark Cinemas 24
7. Whitby Entertainment Centrum
8. Whitby Putting Edge
9. Durham Escape Rooms
10. Playdium
11. Sky Zone Trampoline Park
12. The Flying Squirrel
13. Lynde Shores Conservation Area
14. Iroquois Park Sports Center

HEALTH

1. The Health care Professionals
2. Lakeridge Health Whitby
3. Durham Region Health Department
4. CBI Health
5. Shoppers Drugmart

MUNICIPAL GOVERNMENT

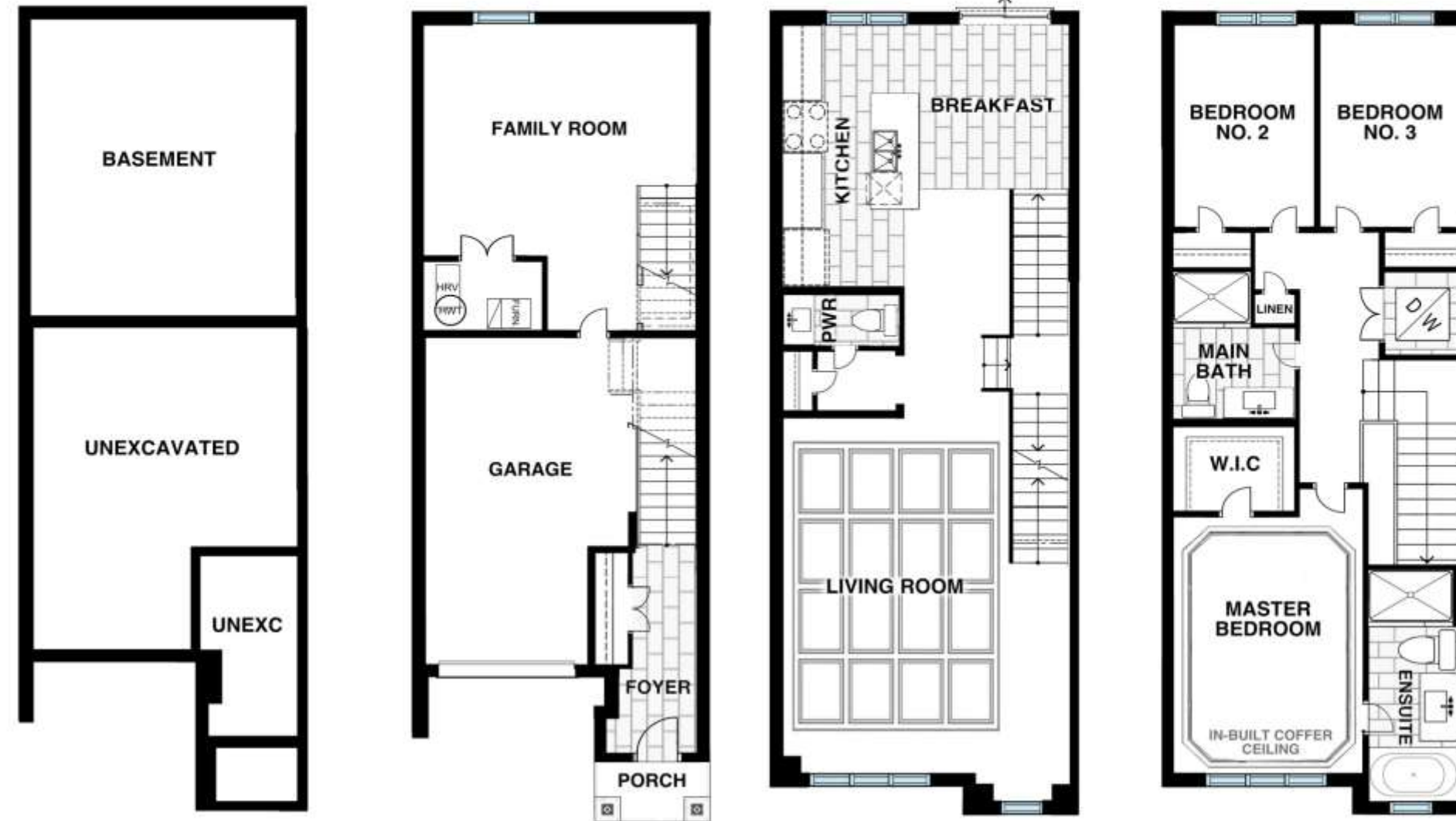
1. Service Canada Centre
2. Canada Revenue Agency
3. Whitby Public Library
4. Durham Region Headquarters
5. Town of Whitby

Heritage Collection

HERITAGE COLLECTION SERIES

This 2082 Sq ft. 3 storey row townhome that features Open to Below Interior railings and access to backyard from the Kitchen Level.

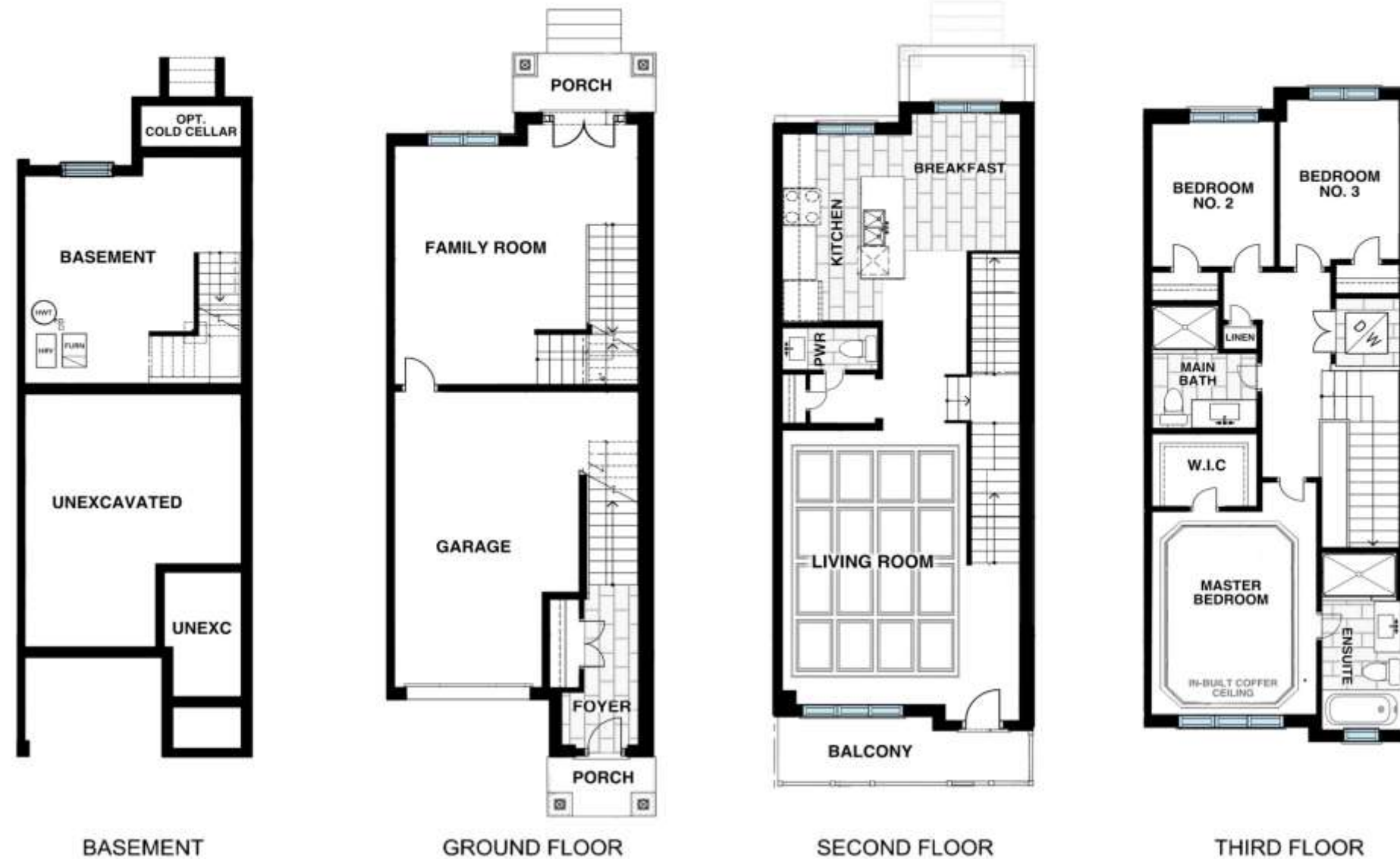
This home features Precast details and architectural stone accents on the Front Elevation.



Estate Collection

ESTATE COLLECTION SERIES

This luxury collection is 2104 Sq Ft not including the unfinished basement. Standing 3 stories worth of living space with dual frontage giving access from both front and back porches.



All illustrations are artist's concept. All measurements and dimensions are approximate only and not guaranteed to be exact or to scale.





**MODERN ON MANN,
BOWMANVILLE**

Infill land development of luxury 3254 Sq. Ft. Custom Homes.



**MANORS ON MAYFIELD,
WHITBY**

Infill land development of 41 freehold townhomes with POTL common element. Current project scheduled to finish May 2026



**WALKOUTS OFF BROCK,
WHITBY**

Infill land Development of 4 bedroom detached homes, with walkout basement included. All homes sold pre-construction & completed.



PENT TOWNS, PENETANGUISHENE

Infill land development of 36 freehold residential townhomes is completed on September 14th of 2023 with 36 Occupancy City Permits



CUSTOM HOME, TORONTO

This stunning Custom Built Home features stone counters, finished basement and hardwood throughout. The attention to detail and luxury quality home features are endless.



NASHVILLE GARDENS, COURTICE

Infill land development of 17 freehold townhomes with POTL common element will be completed in October 2023 with 17 Occupancy City Permits.



CUSTOM HOME, PICKERING

This stunning Custom Built Home features over 6000 Sq/Ft of living space with 6 bedrooms & 7 washrooms. The attention to detail and luxury quality home features are endless.



MANORS ON MAYFIELD

Urban Luxury Towns

WHY MANORS OF MAYFIELD?

DOWNTOWN WHITBY IMPROVEMENT PLAN (CIP) & DOWNTOWN WHITBY ACTION PLAN

- The council has approved both the Downtown Whitby Improvement Plan and the Whitby Action plan that will revitalize businesses and to create a vibrant downtown core. This plan is attracting investors and businesses.
- **Whitby Downtown Action Plan** is to redevelop and will implement growth towards a more vibrant, viable, innovative and walkable vision for downtown Whitby.

ECONOMIC & COMMUNITY DEVELOPMENT

- Whitby is one of Canada's fastest growing communities.
- Rapid economic growth to sustain services, developing infrastructure, facilities and enhancing diverse communities.
- From the creation of the 1855 Whitby – Technology Accelerator, to the expansion of future employment areas, Whitby is well positioned for future growth.
- Lakeridge Health propose new Hospital in Whitby.

ENTERTAINMENT & LEISURE

- Whitby Civic Recreation Complex
- Sky Zone Trampoline Park
- Whitby seniors Activity Park
- Playdium
- Chuck E. Cheese
- Flying Squirrel Trampoline
- IFLY Indoor Skydiving
- Durham Escape Rooms
- Iroquois Beach
- Waterfront Whitby
- Kiwanis Heydenshore Park
- Whitby Lions Promenade

COMMUTE HIGHWAY EXTENSIONS

- Whitby is very accessible to the GTA and other nearby cities and Towns.
- Easy access to several major highways, including Hwy 401, Hwy 7 & Hwy 407.
- Brand new Hwy 412 (West Durham Link) provides fast, convenient access north-south between Hwy 401 and eastern extension of Hwy 407.
- Tolls have been removed from Hwy 412 and 418 for free access.

TRANSIT

- Easy access to Durham Region Transit (DRT) includes a robust schedule and network map to get you around the city and region with ease.
- GO Transit buses travel swiftly from Whitby to many surrounding hot spot areas including Trent University, Durham College/Ontario Tech University, the Pickering Town Centre, up to Beaverton, Hwy 404 to Woodbine Ave., and many more