

Argyle
VILLAGE





IN THE
SPIRIT
OF THE
GOOD
LIFE

SPIRITED, VIBRANT, YOUTHFUL

Welcome to Argyle Village

Argyle Village is a masterfully-designed community of beautiful stacked and rear lane towns, centrally located in Guelph, with easy access to transit and an abundance of amenities. It's a thriving community and a captivating neighbourhood to call home. And like all Reid's Heritage Homes built over the last 45 years, your home will be built with quality, care and craftsmanship.

Feel the buzz!

A TIMELESS HOME WITH YOUTHFUL SPIRIT

Your stylish life

Welcome to a world where modern designs seamlessly blend with the art of living. Nestled in the heart of Guelph, residences offer exquisite floorplans, catering to open concept living boasting dreamy kitchens and expansive windows, redefining the boundaries of beauty and functionality. Experience a life where every detail is meticulously designed to elevate your living experience. Where your home becomes the embodiment of contemporary luxury.

Feel at home!



ELEVATED BEAUTY

Welcome home to luxury

Thoughtfully designed spaces and a meticulously crafted layout promote a sense of well-being and balance. Whether you're entertaining guests or relaxing after a long day, come home to a place where you can fully immerse yourself in the art of living and embrace a lifestyle that is both luxurious and fulfilling.

Feel the energy!





MODERN ELEGANCE

Welcome home to style

Bright, spacious, welcoming and extremely stylish. Your home at Argyle Village will impress with every detail - from the timeless finishes, to the breathtaking views, to perfectly-planned kitchens and spacious floorplans, it's a home you'll be proud to share with others.

Feel the energy!



All drawings are Artist's concepts only and may vary slightly from the final product. E & O.E.



IN THE
SPIRIT OF
EXCITING
LIVING

W

ARTFUL LIVING IN GUELPH

Discover the magic

Want to be right in the heart of a vibrant city? Steps away from Argyle Village are all of the modern conveniences you have come to expect, including well-known pharmacies, restaurants, coffee shops, and fitness centres. Outdoor spaces like Orin Reid Park Playground, Gosling Gardens Park and Westminster Woods Trail bring the community together and provide a wonderful respite from the daily hustle.

Historic downtown Guelph is centrally located and only a short drive from Argyle Village. You'll also find numerous restaurants, grocery stores, one-of-a-kind boutiques, cafés, and professional services for all of your family's needs. Events happen all-year long and bring the city together.

Guelph has the best of both worlds - city conveniences and small-town charm. Your life in the city will be spirited, vibrant, connected and rewarding.

Feel the excitement!

LIVING THE GOOD LIFE

IN GUELPH

Big city amenities, delicious eating, fun living... welcome to an incredible place to call home. Argyle Village in Guelph is steps to the best culture, nightlife, opportunities, restaurants, galleries, shopping and a major university. It's a stunning neighbourhood set in thriving area.

Feel the fun!



SPIRITED,
VIBRANT,
EASY LIVING
AT ITS BEST.

SHOPPING

Everyone loves grabbing a delicious treat from Balzac's on a Saturday morning and heading out to do a little shopping, and here in Guelph you are in luck. At Argyle Village, you're surrounded by countless shopping options, including the city's charming downtown filled with unique shops and independent stores like Rug and Weave and the eclectic On The Verge.

DELICIOUS DINING

Enjoy the countless dining establishments within walking distance from Argyle Village such as Borealis Grille and Bar, or Boathouse - a locally sourced tearoom and ice cream parlour located just off the Speed River. Visit Downtown Guelph, with patios that line the streets. You'll find bakeries, cafés, butchers, food specialty stores, and so much more.

FUN ACTIVITIES

Outdoor adventure in the city begins at Hanlon Creek Park and South End Community Park for the splash pads, and continues at Lyon Leisure Pool for outdoor swimming. For your four-legged friends, the south end of Guelph is home to the area's biggest leash-free dog park. The City runs various city libraries and recreation centres that offer swimming, skating, and more. Golfing in and around Guelph is a dream, with options including Victoria Park Valley Golf Course and Turtle Creek Golf Club, to name just a few. Don't miss the Hillside Festival, a not-for-profit music and artistic expression festival, attended by thousands annually.

TIME TO EXPLORE

We love Preservation Park! Home to hiking trails and expansive boardwalks in the middle of the city, with an entrance just a stone's throw away from Argyle Village. Discover the beauty of the Arboretum, which offers various nature trails through 400 acres of gardens, woodlands and meadows. Don't forget to discover Aberfoyle. Aberfoyle provides great day trip options like Starkey Hill Conservation Area and Fletcher Creek Ecological Preserve. Argyle Village is only ten minutes away from the 401 and 45 minutes to the airport, making it easy access for commuters and travelers of any kind.

OPPORTUNITY & CULTURE

The University of Guelph is minutes away, providing excellent postsecondary education and job opportunities. It's also one of Guelph's largest employers. Conestoga College is a leader in polytechnic education and one of Ontario's fastest growing colleges. Both Wilfrid Laurier University and University of Waterloo are also within driving distance. Major industries in Guelph include advanced manufacturing, agriculture and food innovation, and environmental management and technology, as well as a plentiful creative scene.

Global manufacturing leader Linamar Corporation and other major corporations make Guelph their main hub, providing huge opportunities for advancement.

For art and museum lovers Guelph has much to offer. The Art Gallery of Guelph, The Garden House Art Gallery, Renann Isaacs Contemporary Art, the McCrae House, the Guelph Civic Museum, Locomotive 6167 and The Children's Art Factory. Home to the University of Guelph's School of the Arts, you'll discover art in and around the city everywhere.

GUELPH CHARMS

WITH FABULOUS AMENITIES AND A COVETED LOCATION

WELCOME TO DOWNTOWN

Guelph



SOME DOWNTOWN FAVOURITES

DINING

1. Atmosphere Cafe + Etc.
2. Baker Street Station
3. Buon Gusto Restaurant
4. Crafty Ramen
5. La Reina
6. Mijjida
7. Royal Electric Bar

SHOPPING

1. Grit & Grace
2. If Footwear
3. Kennedy Park
4. Lady Glaze Doughnuts
5. Lovely Co
6. Market Fresh
7. Play with Clay
8. Rug & Weave
9. Sunday General Store
10. The Patch

ARTS & CULTURE

1. Gritt Gallery
2. Guelph Farmer's Market
3. The Bookshelf
4. The Children's Art Factory
5. Market Square

COMMUNITY

1. Downtown Guelph Business Association
2. Guelph Central Station (Go Train)
3. Guelph Public Library

CHECK OUT THE APPROXIMATE DRIVE TIMES FROM ARGYLE VILLAGE TO THE FOLLOWING CITIES:

TORONTO
1 HOUR

HAMILTON
40 MIN

WATERLOO REGION
25 MIN

MILTON
25 MIN



IN THE SPIRIT OF COMFORT

STACKED TOWNHOMES

THE PERFECT PLAN

Modern towns

Our townhome floorplans have been expertly designed and make use of every inch of space to fully optimize your home's size. This means you can live large and easy in spaces that feel both cosy and spacious

Feel the comfort!

All drawings are Artists' concepts only and may vary slightly from the final product. E&O.E.

UNIT 1

THE CHELSEA

THE TERRACE SUITE | 900 SQ. FT.
2 BED | 2 BATH

UNIT 2

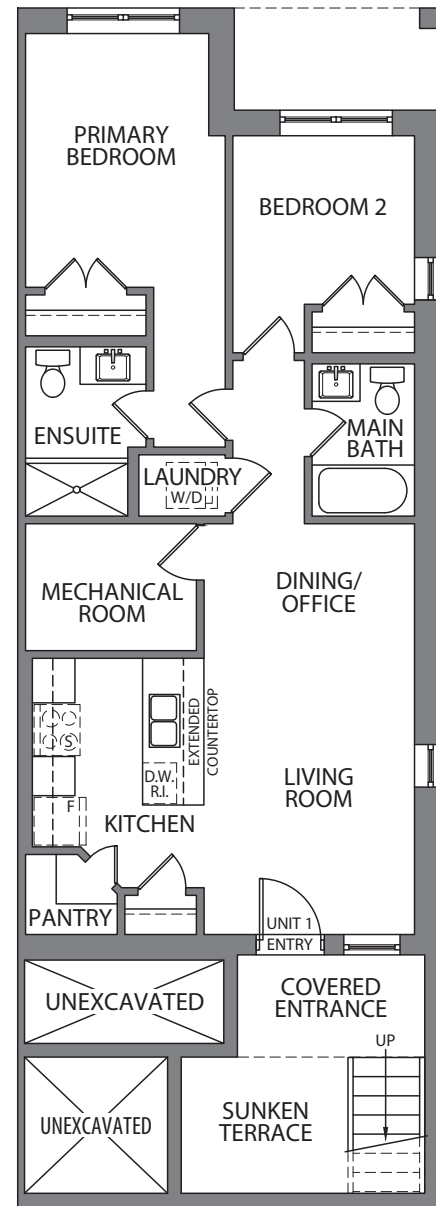
THE MADISON

THE MAIN FLOOR SUITE | 780 SQ. FT.
2 BED | 2 BATH

UNIT 3

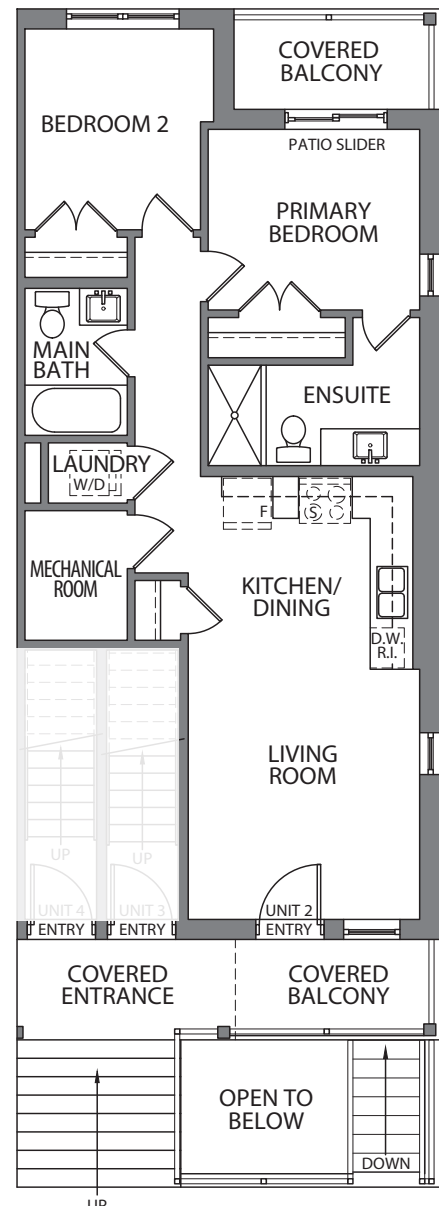
THE HUNTER

THE FRONT UPPER SUITE | 1,050 SQ. FT.
2 BED | 2 BATH



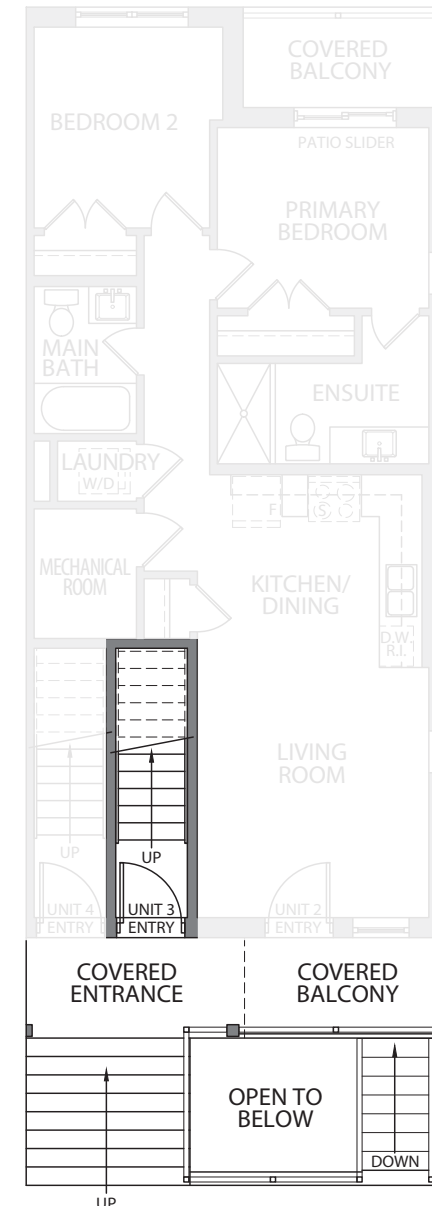
WINDOWS AT END UNITS ONLY

TERRACE LEVEL

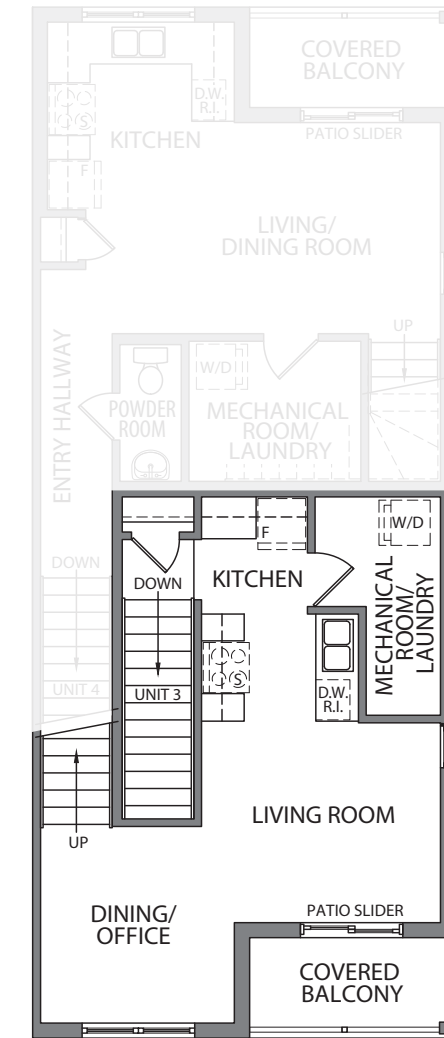


WINDOWS AT END UNITS ONLY

MAIN LEVEL

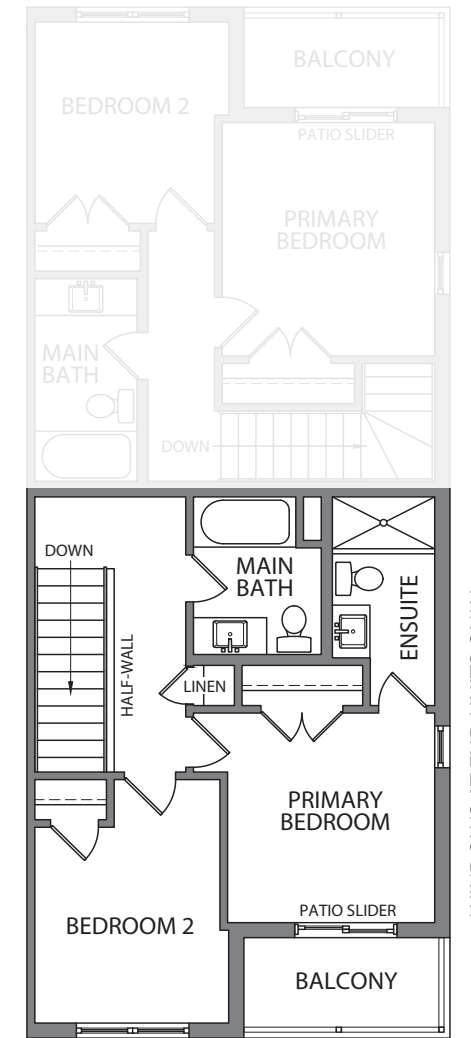


MAIN LEVEL



WINDOWS AT END UNITS ONLY

SECOND LEVEL



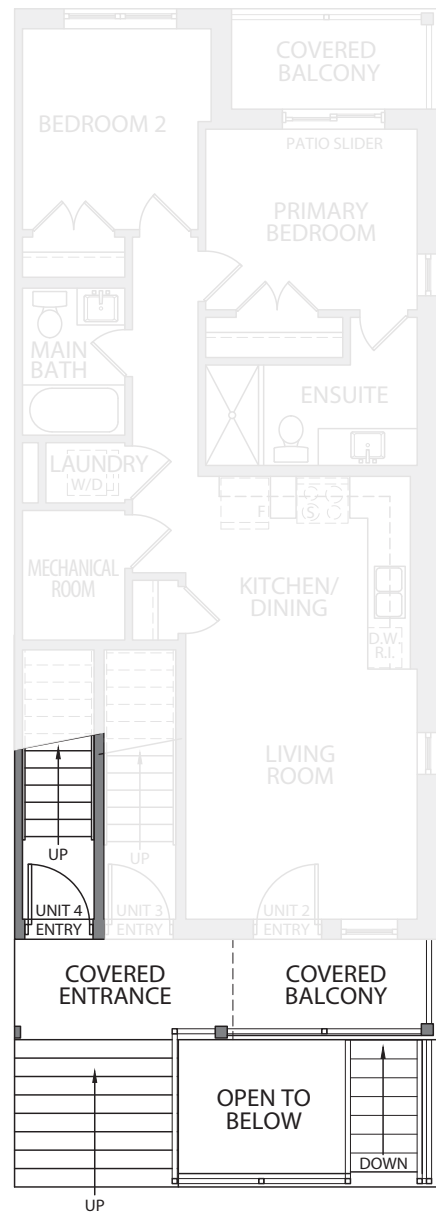
WINDOWS AT END UNITS ONLY

THIRD LEVEL

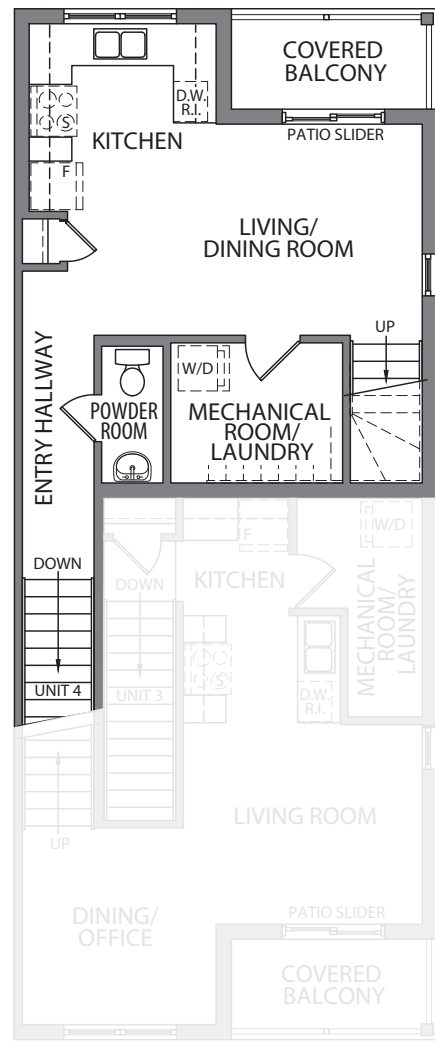
All drawings are Artist's Concepts only and may vary slightly from the final product. E&O.E. The home shown may be the reverse of the home purchased. Actual useable floor space may vary from stated area, and square footage has been calculated based on useable living space according to TARIION rules and does not include garage or basement areas (unless otherwise stated). More detailed information is set out in the Agreement of Purchase and Sale. Drawings may show optional features which may not be included in the base Purchase Price. Bulkheads and box outs may be required as chases for plumbing and mechanical. Garage man door, if applicable, location may vary subject to grade. In an ongoing review of our homeowner's needs, changes may have been incorporated into our "New Home Features" and construction techniques. All plans and specifications are subject to reasonable modification, as necessary, at the discretion of the Vendor, without notice. © 01/2024

THE KENNEDY

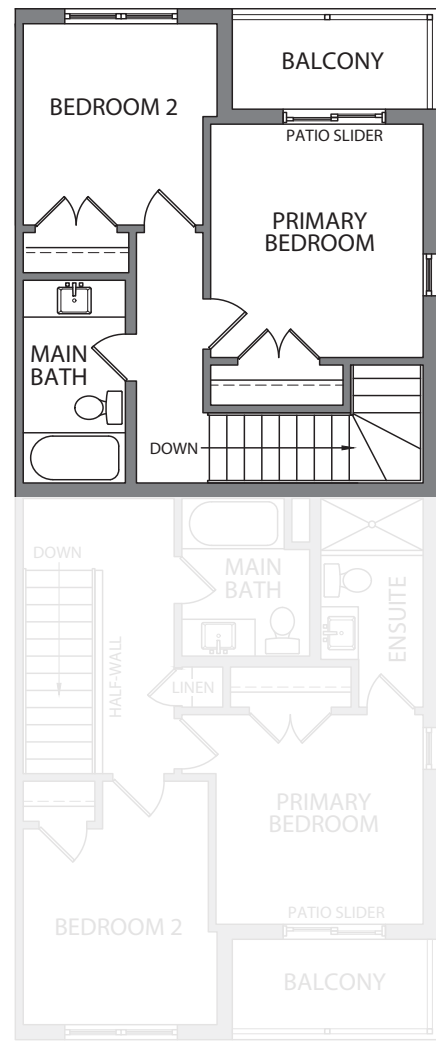
THE REAR SUITE | 980 SQ. FT.
2 BED | 1.5 BATH



MAIN LEVEL



SECOND LEVEL



THIRD LEVEL

WINDOWS AT END UNITS ONLY

WINDOWS AT END UNITS ONLY



All drawings are Artist's Concepts only and may vary slightly from the final product. E&O.E. The home shown may be the reverse of the home purchased. Actual useable floor space may vary from stated area, and square footage has been calculated based on useable living space according to TARIION rules and does not include garage or basement areas (unless otherwise stated). More detailed information is set out in the Agreement of Purchase and Sale. Drawings may show optional features which may not be included in the base Purchase Price. Bulkheads and box outs may be required as chases for plumbing and mechanical. Garage man door, if applicable, location may vary subject to grade. In an ongoing review of our homeowner's needs, changes may have been incorporated into our "New Home Features" and construction techniques. All plans and specifications are subject to reasonable modification, as necessary, at the discretion of the Vendor, without notice. © 01/2024.

All drawings are Artist's concepts only and may vary slightly from the final product. E & O.E.

IN THE SPIRIT OF COMFORT

REAR LANE GARAGE TOWNHOMES

THE PERFECT PLAN

Rear lane garage townhomes

Our Rear Lane Townhomes are loved by our homeowners, and it's no wonder when thoughtfully designed spaces are the norm. You'll discover open functional areas, modern kitchens, convenient rear access, garages, innovative floor plan options, and charming porches and balconies - it's smart design making use of every inch of space and offering both style and function!

Feel the ease!

All drawings are Artist's concepts only and may vary slightly from the final product. E & O.E.

UNIT 1

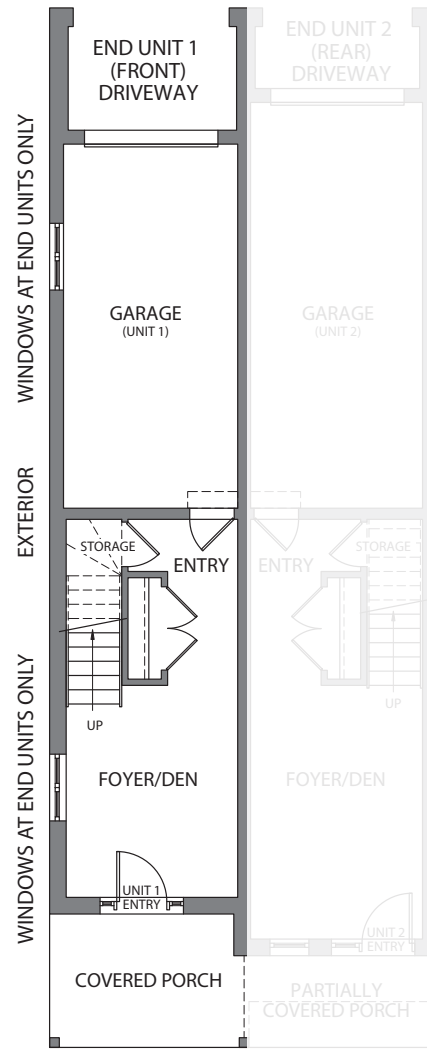
THE TAYLOR

THE FRONT SUITE | 1,390 SQ. FT.
2 BED | 2.5 BATH

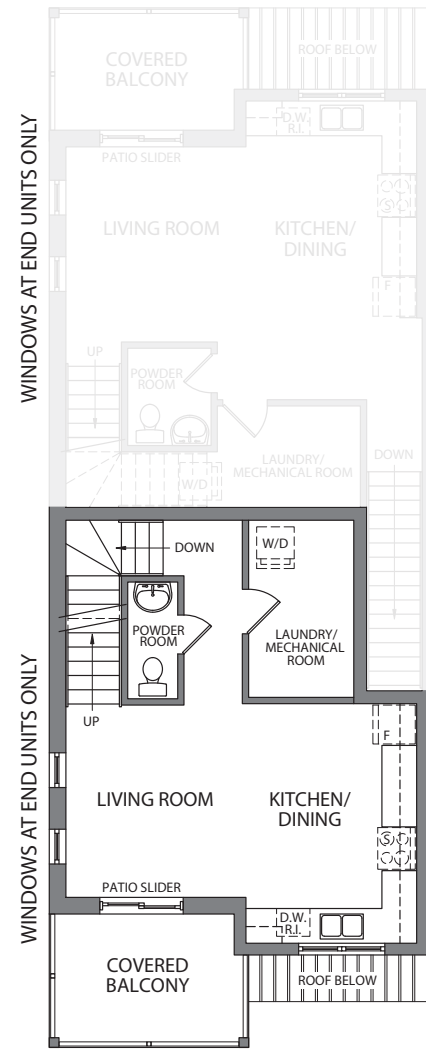
UNIT 2

THE WESTON

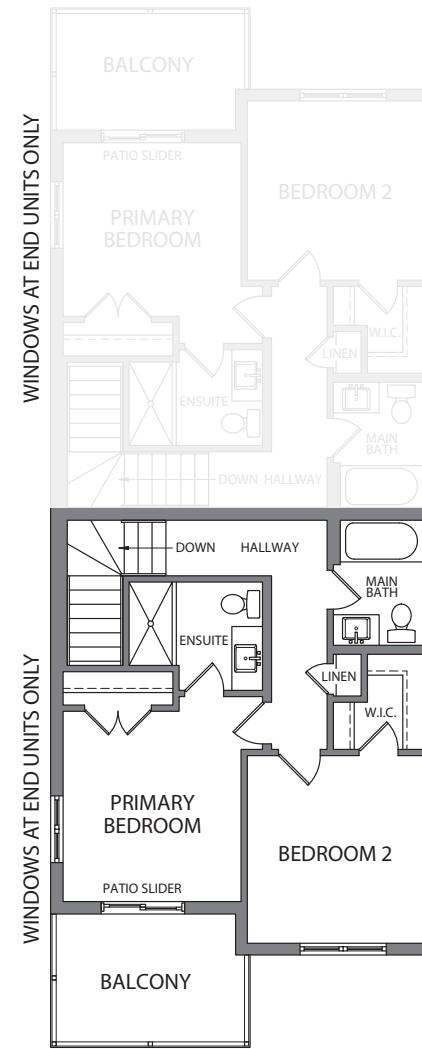
THE REAR SUITE | 1,445 SQ. FT.
2 BED | 2.5 BATH



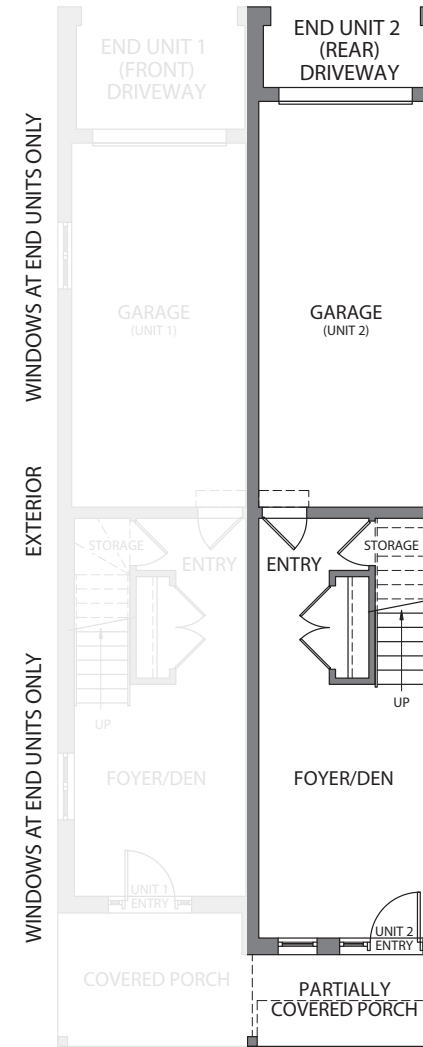
MAIN LEVEL



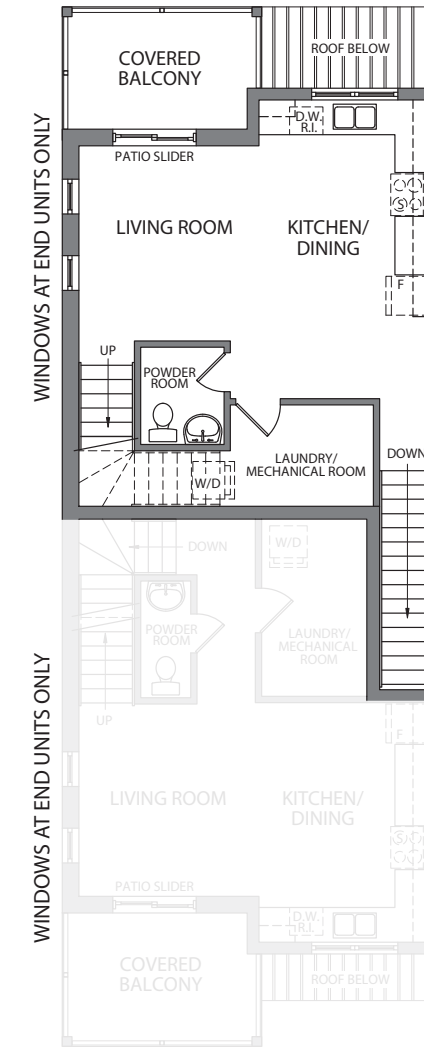
SECOND LEVEL



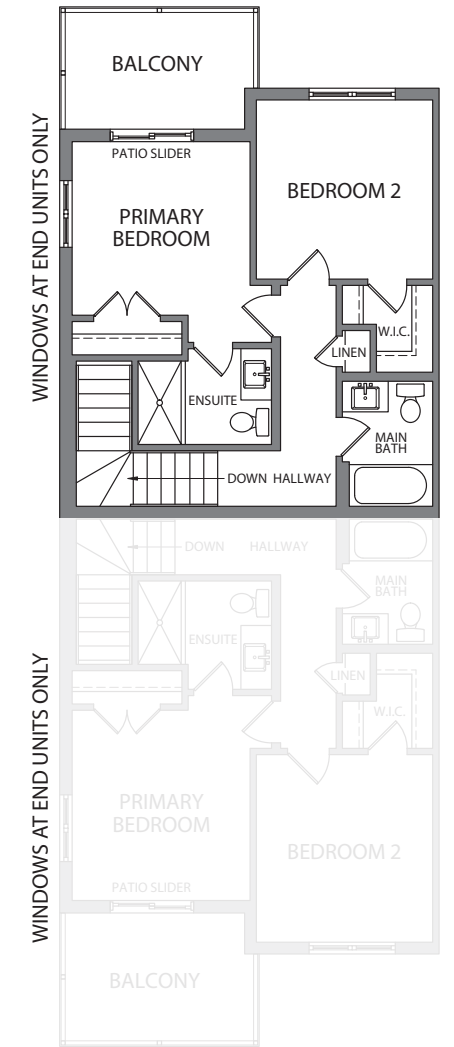
THIRD LEVEL



MAIN LEVEL



SECOND LEVEL



THIRD LEVEL

All drawings are Artist's Concepts only and may vary slightly from the final product. E&O.E. The home shown may be the reverse of the home purchased. Actual useable floor space may vary from stated area, and square footage has been calculated based on useable living space according to TARIION rules and does not include garage or basement areas (unless otherwise stated). More detailed information is set out in the Agreement of Purchase and Sale. Drawings may show optional features which may not be included in the base Purchase Price. Bulkheads and box outs may be required as chases for plumbing and mechanical. Garage man door, if applicable, location may vary subject to grade. In an ongoing review of our homeowner's needs, changes may have been incorporated into our "New Home Features" and construction techniques. All plans and specifications are subject to reasonable modification, as necessary, at the discretion of the Vendor, without notice. © 01/2024



THOUGHTFUL DESIGNS

For living the good life

Nestled between the heart of the city, green spaces and exciting amenities, Argyle Village is a community where you'll live your best life. It's a place you'll love coming home to, a community masterfully-planned that feels welcoming and exciting. It's the home you've been dreaming of!

Feel the love!

All drawings are Artist's concepts only and may vary slightly from the final product. E & O.E.

IN THE SPIRIT OF CHOICE

URBAN STACKED TOWNHOMES

THE CHELSEA
TERRACE SUITE
900 SQ. FT.

THE MADISON
MAIN FLOOR SUITE
780 SQ. FT.

THE HUNTER
FRONT UPPER SUITE
1,050 SQ. FT.

THE KENNEDY
REAR UPPER SUITE
980 SQ. FT.

REAR LANE GARAGE TOWNHOMES

THE TAYLOR
FRONT SUITE
1,390 SQ. FT.

THE WESTON
REAR SUITE
1,445 SQ. FT.



Drawing is Artist's concept only and may vary pending final product and site plan approvals. All information is deemed accurate at time of printing and may change depending on final survey. All information is based on preliminary drawings. Final lot sizes, shape, grading, light standard locations, utility transformer locations, sidewalk and driveway locations are subject to final site plan approval & various utility preferences may change. E & O.E. January 2024

THERE'S SO MUCH TO LOVE

At Argyle Village in Guelph

Connect with others, enjoy time alone, host a dinner party, embark on a night out, or an adventure... no matter your mood, the easy location and exciting vibe at Argyle Village is the perfect place to start creating moments you'll never forget.

Feel the adventure!



IN THE SPIRIT OF GOOD DESIGN

DESIGNER INSPIRATION PACKAGES

For stylish & functional living

The design experts at Reid's Heritage Homes have carefully selected stunning design packages that truly shine!

At Argyle Village, you'll choose from beautiful selections that will enhance your home and make it personally yours. With a lovely choice of materials, colour palettes and finishes that have been expertly curated, your home is sure to be stylish, comforting and as unique as you.

ESPRESSO MACCHIATO



BONE DRY CAPPUCCINO



COLD BREW



FLAT WHITE

LONDON FOG LATTE

Selections, options and extras are subject to change without notice. E & O.E.

OUR PROMISE TO YOU

WE DON'T
JUST BUILD
COMMUNITIES

We ARE one.



When you purchase a home from Reid's Heritage Homes you can feel assured that we will deliver the very highest level of design, construction and customer service. This has been demonstrated throughout our 45-year history and underlines what the word "heritage" means to us: treating customers with kindness, respect and compassion throughout the home purchase and building process.

At Reid's Heritage Homes, we don't just build communities, we are one. We strive to create a highly inclusive and supportive work environment for our team members and to extend this inclusivity and support to our purchasers. We recognize that

when people buy a new home they have hopes of becoming connected to a community where they will be warmly welcomed. We feel that sense of community should begin with us.

Our craftsmanship, quality and customer care starts with the very first design concept and goes all the way through to every single tradesperson and supplier who walks through the door. We believe there is much more to buying a new home than just handing over a set of keys. There is a process of communication, understanding and caring that is very individualized and can only be delivered by a first-class Customer Experience Team. As such, our Customer Experience

Team works closely with purchasers to keep them fully informed every step of the way.

Buying a new home is an exciting time, a once-in-a-lifetime experience for many people. The Reid's Heritage Homes promise is to guide you through your home buying experience with kindness, respect and compassion.



REID'S HERITAGE
HOMES

reidsheritagehomes.com

ARGYLEVILLAGE.COM



REID^S HERITAGE
H O M E S